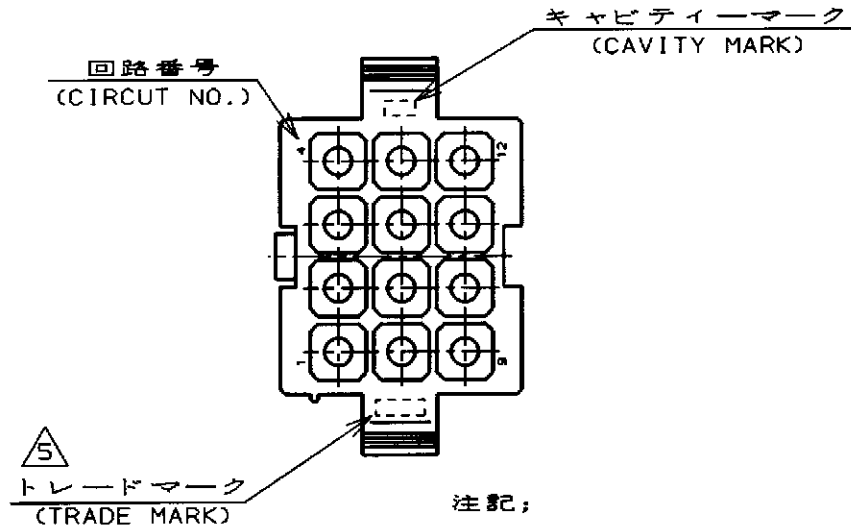
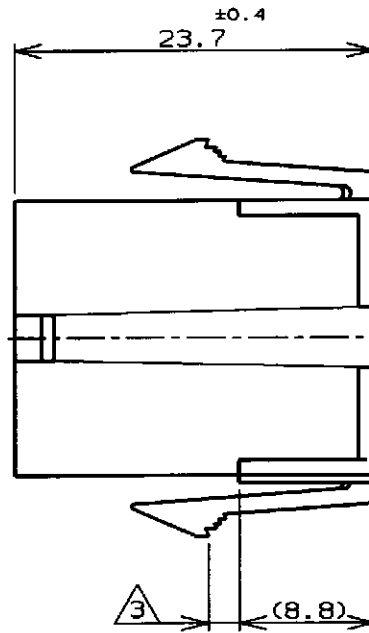
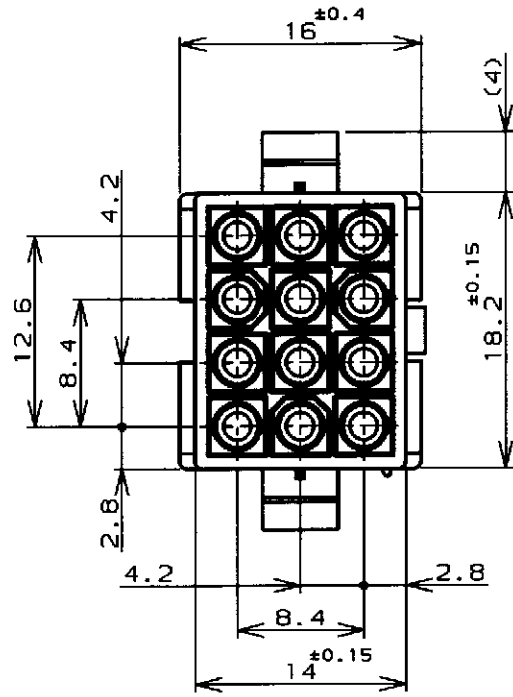


REVISIONS					
P	LTR	DESCRIPTION	ECN	DATE	APVD
C		再作成 (REDRAWN)	FJ00-0871-98	8 Jun '98	my MS

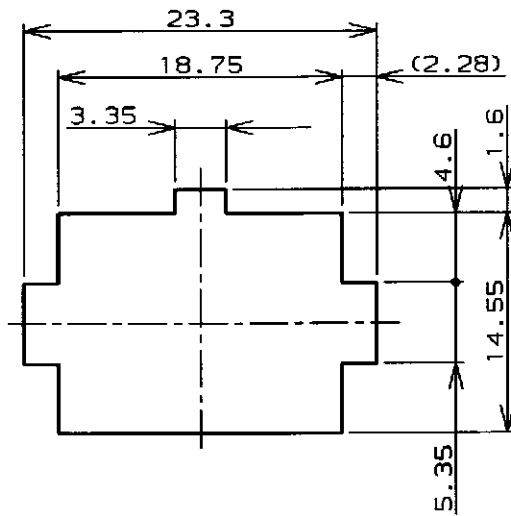


注記:

1. 使用端子型番は170359, 170360, 170361, 170362
2. 嵌合相手ハウジング型番は172170
- △ 3 適用パネル厚 0.8~2.0mm
4. 取付穴打抜方向とハウジングの挿入方向は同じとする。
- △ 5 表1参照

NOTE:

1. APPLICABLE CONT P/N: 170359, 170360, 170361, 170362
2. MATING HSG P/N: 172170
- △ 3 APPLICABLE PANEL THICKNESS: 0.8~2.0mm
4. HOUSING INSERTION INTO THE PANEL CUT-OUT MUST BE DONE IN THE SAME DIRECTION WITH PUNCH KNOCKING.
- △ 5 SEE TABLE 1



寸法公差は±0.20
(TOLERANCE: ±0.20)

パネル取付穴
(RECOMENDED PANEL OPENING DIMENSION)

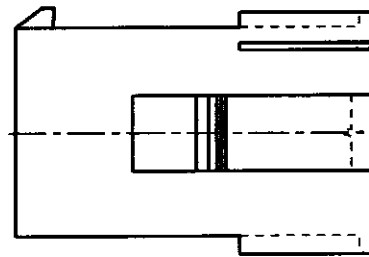


表1 (TABLE 1)

トレードマーク (TRADE MARK)	生産場所 (MANUFACTURING PLACE)
-AMP OR AMP	日本 (JAPAN)
-+AMP OR AMP	中国 (CHINA (PRC))

黒 (BLACK)	1-172162-9
青 (BLUE)	1- -6
緑 (GREEN)	1- -5
赤 (RED)	1- -2
自然色 (NATURAL)	172162-1
色 (COLOR)	型番 (P/N)
WIRE RANGE 被合電線断面積	INSULATION DIA 被覆外径

THIS DRAWING IS A CONTROLLED DOCUMENT FOR AMP INCORPORATED. IT IS SUBJECT TO CHANGE AND THE CONTROLLING ENGINEERING ORGANIZATION SHOULD BE CONTACTED FOR THE LATEST REVISION.		OWN M. Yamazaki 8 Jun '98	AMP		日本エー・エム・シー株式会社 Kawasaki, Japan
DIMENSIONS: 単位: 概 mm		CHK M. Shin 15 Jun '98	NAME 12極ミニユニバーサルメイトンロックキャップハウジング (UL94V-0)		RESTRICTED TO
TOLERANCES UNLESS OTHERWISE SPECIFIED 一般公差 (GENERAL TOLERANCE) ±0.3		APVD M. Shin 15 Jun '98	12Pos MINI UNIVERSAL MATE-N-LOCK CONN. CAP HOUSING (UL94V-0)		
MATERIAL 66ナイロン UL94V-0 (66NYLON UL94V-0)		FINISH 仕上	PRODUCT SPEC 108-5138		SIZE A3
			INSTRUCTION SHEET 取り扱い説明書 IS-105J		CAGE CODE 00779
			WEIGHT		DRAWING NO C=172162
			CUSTOMER DRAWING		SCALE 2-1
					SHEET 1 OF 1
					REV C

参考図面